

Preview File Edit View Go **Tools** Window Help

2017-03-27 at 10.10.43

Search

Show Inspector ⌘I  
Show Magnifier

Adjust Color... ⌘⌘C  
Adjust Size...

Text Selection  
✓ Rectangular Selection

**Annotate** ▶

Add Bookmark ⌘D

Rotate Left ⌘L  
Rotate Right ⌘R  
Flip Horizontal  
Flip Vertical  
Crop ⌘K

Assign Profile...  
Show Location Info

Highlight Text ^⌘H  
Underline Text ^⌘U  
Strike Through Text ^⌘S

Rectangle ^⌘R  
Oval ^⌘O  
Line ^⌘I  
Arrow ^⌘A

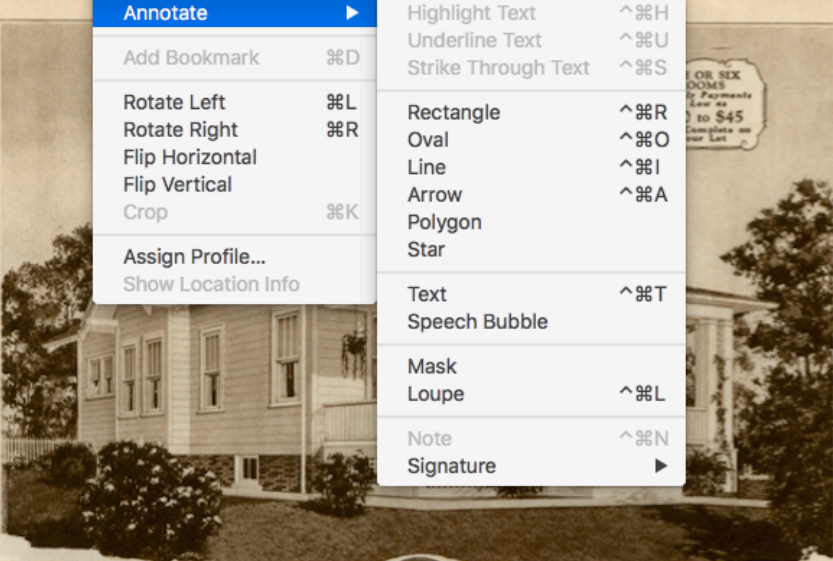
Polygon  
Star

Text ^⌘T  
Speech Bubble

Mask  
Loupe ^⌘L

Note ^⌘N  
Signature ▶

**From The Catalog**  
Let's take a look at some of the house, and how they match up to the catalog.



**THE WINONA BUNGALOW** is a good illustration of the American cottage type house. Though built along simple lines it is sure to hold the eye of the prospective builder because the varicolored roof lines and cozy front porch give it a pleasing view from either perspective.

This house is shown with two floor plans. Plan "A" contains five rooms and is 24 feet wide by 36 feet long. Plan "B" is 24 feet by 40 feet and has a six-room arrangement. The outside walls are planned to be covered with 6-inch bevel siding and we suggest that the entire house be painted white or ivory with red or varicolored roof.

Can be built on a 32-foot lot

**Honor Bill**  
**The Winona**  
No. 12010A "Already Cut" and Fitted Five Rooms. No. 12010B "Already Cut" and Fitted Six Rooms. For Complete Delivered Price Fill Out Information Blank. Pages 129 and 130.

**PLAN 12010A**  
THE ENTRANCE from the front porch of this plan is into the vestibule, which contains a handy closet for outer wraps. The left side of the plan is devoted to living room, size 12 feet 5 inches by 12 feet 11 inches, dining room and kitchen. The opening between the living room and dining room is planned for a plaster arch. The kitchen is well lighted with two large windows and contains a good location for all necessary equipment. Kitchen cabinets complete of

Can be built on a 30-foot lot

KITCHEN 8'-4" x 10'-0"  
DINING ROOM 12'-5" x 12'-11"  
LIVING ROOM 12'-5" x 12'-4"  
BED ROOM 10'-0" x 11'-0"  
BED ROOM 10'-0" x 11'-0"  
BATH 5'-0" x 7'-0"  
HALL  
CLOSET

OR SIX ROOMS by Payments Less as to \$45 Complete on your Lot

Sears Winona 1930 catalog

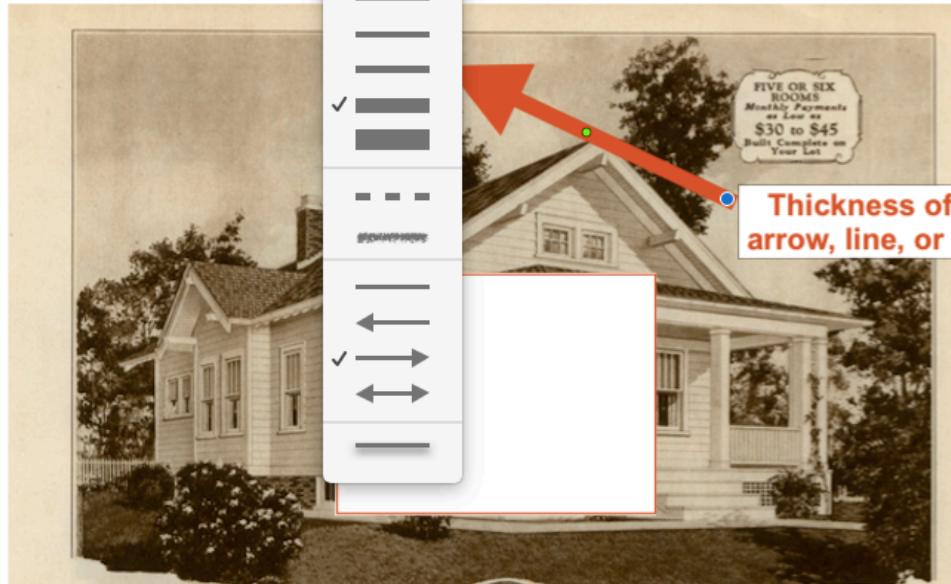


Search



# From The Catalog

Let's take a look at some of the interior of the house, and how they match up to the catalog.



Thickness of your arrow, line, or border

**T**HE WINONA BUNGALOW is a good illustration of the American cottage type house. Though built along simple lines it is sure to hold the eye of the prospective builder because the varicolored roof lines and cozy front porch give it a pleasing view from either perspective.

This house is shown with two floor plans. Plan "A" contains five rooms and is 24 feet wide by 36 feet long. Plan "B" is 24 feet by 40 feet and has a six-room arrangement. The outside walls are planned to be covered with 6-inch bevel siding and we suggest that the entire house be painted white or ivory with red or varicolored roof.

Can be built on a 32-foot lot

**Honor Built**  
**The Winona**  
No. 12010A "Already Cut" and Fitted Five Rooms, No. 12010B "Already Cut" and Fitted Six Rooms. For Complete, Delivered, Price Fill Out Information Blank. Pages 128 and 129.

**PLAN 12010A**  
THE ENTRANCE from the front porch of this plan is into the vestibule, which contains a handy closet for outer wraps. The left side of the plan is devoted to living room, size 12 feet 5 inches by 12 feet 11 inches, dining room and kitchen. The opening between the living room and dining room is planned for a plaster arch. The kitchen

Can be built on a 30-foot lot



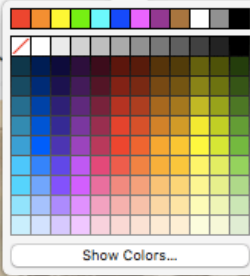
Sears Winona 1930 catalog



# From The Catalog

Let's take a look at some of the interior

and how they match up to the catalog.



Color of your arrow, line, or border



**T**HE WINONA BUNGALOW is a good illustration of the American cottage type house. Though built along simple lines it is sure to hold the eye of the prospective builder because the varicolored roof lines and cozy front porch give it a pleasing view from either perspective.

This house is shown with two floor plans. Plan "A" contains five rooms and is 24 feet wide by 36 feet long. Plan "B" is 24 feet by 40 feet and has a six-room arrangement. The outside walls are planned to be covered with 6-inch bevel siding and we suggest that the entire house be painted white or ivory with red or varicolored roof.

Can be built on a 32-foot lot

**Honor Built**

**The Winona**

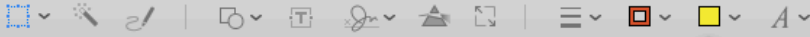
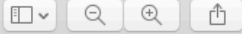
No. 12010A "Already Cut" and Fitted Five Rooms. No. 12010B "Already Cut" and Fitted Six Rooms. For Complete Delivered Price Fill Out Information Blank. Pages 129 and 130.

**PLAN 12010A**  
THE ENTRANCE from the front porch of this plan is into the vestibule, which contains a handy closet for outer wraps. The left side of the plan is devoted to living room, size 12 feet 5 inches by 12 feet 11 inches, dining room and kitchen. The opening between the living room and dining room is planned for a plaster arch. The kitchen

Can be built on a 30-foot lot

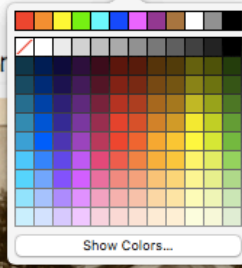


Sears Winona 1930 catalog



## From The Catalog

Let's take a look at some of the interior features and see how they match up to the catalog.

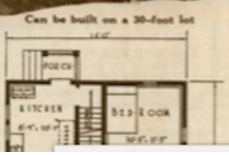


Color of your fill



**T**HE WINONA BUNGALOW is a good illustration of the American cottage type house. Though built along simple lines it is sure to hold the eye of the prospective builder because the varicolored roof lines and cozy front porch give it a pleasing view from either perspective.  
This house is shown with two floor plans. Plan "A" contains five rooms and is 24 feet wide by 36 feet long. Plan "B"

**Honor Built**  
**The Winona**  
No. 12010A "Already Cut" and Fitted Five Rooms. No. 12010B "Already Cut" and Fitted Six Rooms.  
For Complete Detailed Price Fill Out Information Blank. Pages 129 and 130.  
**PLAN 12010A**



# From The Catalog

Let's take a look at some of the interior features of the house, and how they match up to the catalog.

**FIVE OR SIX ROOMS**  
Monthly Payments as low as  
**\$30 to \$45**  
Built Complete on Year

**Color , size, style of text**

**Honor Bill**  
**The Winona**  
No. 12010A "Already Cut" and Fitted  
Five Rooms. No. 12010B "Already Cut"  
and Fitted, Six Rooms.  
For Complete Delivered Price Fill  
Out Information Blank.  
Pages 129 and 130.

**PLAN 12010A**  
THE ENTRANCE from the front porch of this plan is into the vestibule, which contains a handy closet for outer wraps. The left side of the plan is devoted to living room, size 12 feet 5 inches by 12 feet 11 inches, dining room and kitchen. The opening between the living room and dining room is planned for a plaster arch. The kitchen is well lighted with two large windows and contains a good location for all necessary equipment. Kitchen cabinets consisting of

Can be built on a 32-foot lot

Can be built on a 30-foot lot

Sears Winona 1930 catalog